



ITEM NO. AIA 11400

## AUTOMATIC BROILERS

### MODEL N824 & N850 G & E

The Nieco Model N824 & N850 is a flow-through broiler designed for high volume applications. The N824 is a single belt unit, while the N850 features dual belts.

### FEATURES

- Bun Grill
- Digital Controls
- Automatic Ignition
- Flow-through Operation
- Side Burner Access Panel
- Single or Dual Broil Belts
- Automatic Temperature Control

### OPTIONS

- Stand
- Catalyst Kit
- Spare Motor
- Spare Parts Kit
- Automatic Feeder
- Natural or Propane Gas, Electric

### ACCESSORIES

- Quick Disconnect Gas Hose  
(where permitted)

### THE NIECO ADVANTAGE

All Nieco equipment is backed by a world-wide sales and service network, with local parts inventories and 24-hour emergency service. Included in the price of the Nieco Broiler is a visit by an authorized distributor representative to start-up the broiler, activate the warranty and demonstrate to the store personnel how to clean and operate the broiler.

### NIECO CORPORATION

7950 Cameron Drive  
Windsor, CA 95492  
707.284.7100  
Fax 707.284.7430  
www.nieco.com email: sales@nieco.com  
Re-order P/N 9999-99166 4.04



Model N850 shown with optional automatic feeder and stand

### BENEFITS OF AUTOMATION:

- Consistency
- Versatility
- Speed
- Quality
- Flexibility

### APPROVALS:



### DISTRIBUTED BY:



AUTOMATIC BROILERS

**AUTOMATIC BROILER**  
 Model N824/N850 G

DIMENSIONS	INCH	MM
Length	34.45	875
Height	63.36*	1609
Width	37.42	950

\* Height shown on optional stand. Height is 29.8" without optional stand.

**ENERGY - GAS MODELS**

Gas connection 3/4" N.P.T.

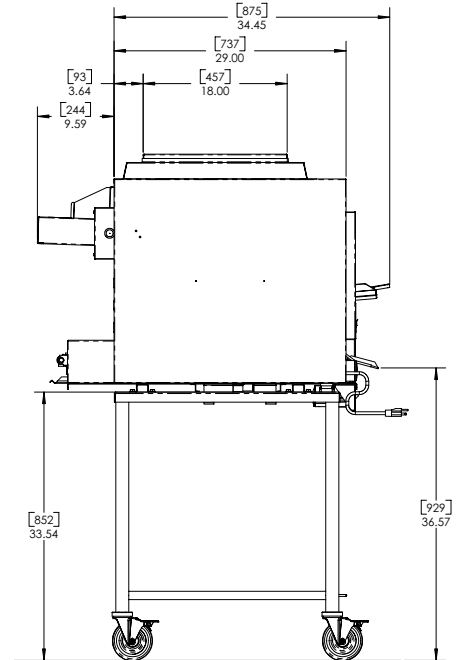
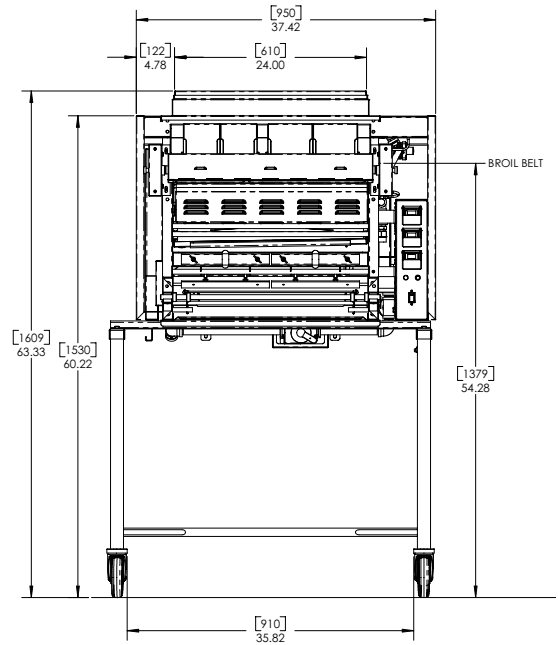
Electrical connection (specify exact voltage)

Domestic 208-240Y120V IØ 50/60Hz 13A

Natural Gas	3" W.C.	5" W.C.
BTU/hr	90,500	117,600

WEIGHT	LB	KG
Shipping	440	200

EXHAUST	CFM	CMH
Typical	800	1020



**BIDDING INFORMATION**

Nieco Model N824 & N850, using infrared and convective heating and a continuous chain conveyor. Broiler shall be constructed of stainless steel frame with stainless steel enclosure panels.

Model N824 & N850, shall be gas-fired or electric, and manufactured to operate on Natural Gas at 3" & 5" W.C., at the factory. Broiler shall have 6 burners - 4 top and 2 bottom, and side access for lower burner removal.

Model N850 shall be equipped with up to two independently controlled meat belts. Broil belts shall be individually timed by a digital speed controller, and shall be constructed of stainless steel and supported by non-lubricated bearings.

**NIECO CORPORATION**

7950 Cameron Drive  
 Windsor, CA 95492  
 707.284.7100  
 Fax 707.284.7430  
 www.nieco.com email: sales@nieco.com  
 Printed in the USA  
 © 2003 Nieco Corporation  
 P/N 9999-99166 4.04